

Machinery & Equipment Sales Department

 **FUJI TRADING CO., LTD.**

Value-More to the World Aiming to be a provider of Global Value

Corporate Philosophy

Fuji Trading aims to continually contribute to society as a strong and unique international company, and to be an attractive company where people can be proud to work.



Corporate Profile

Established: May 12, 1953
 Paid-up Capital: JPY 100,000,000.-
 Head office: 3-9-3, Shinyamashita, Naka-Ku,
 Yokohama, 231-0801, Japan
 Marine Logistics Headquarters: Kobe, Japan
 Overseas Bases: 16 as subsidiary, JV and Rep. office
 Employee: 210 in Japan, 600 overseas



Fuji Global Network

World map showing office locations:

- London
- Rotterdam
- Piraeus
- Qatar
- Dubai
- Oman
- Yokohama Head office, Japan
- Busan
- Shanghai
- Hong Kong
- Manila
- Singapore
- Japan
- Baltimore
- Houston
- Rio De Janeiro
- Marine Logistics Headquarters, Kobe Office, Japan

with Engineering Service

Machinery & Equipment Sales Department

Selling marine equipment as a bridge between customers and makers.

Tying up with Japanese marine equipment makers, we sell and supply machinery and equipment to be installed on vessels and offshore facilities to overseas shipyards, engineering companies and shipping companies.

New Building Ships

Modification Projects

Offshore Projects

New Building Ships

We supply reputable machinery & equipment from Japan and other countries to new building vessels including LNG/LPG carriers and other special ships built at shipyards in the world. Utilizing Fuji's global service network, we can offer services to ensure their safety and smooth operation.



EQUIPMENT

- Safety Relief Valve
- Gas Detection System
- Cargo & Air Compressor
- Cargo & E/R Pump
- Tank Monitoring System
- Valves (Globe, Gate, Check, Butterfly)
- Valve Remote Control System
- Deck Machinery
- Shaft Generator
- Boiler & Burner
- Stern Tube Seal
- Cable Transit Seal
- etc.

CLIENTS

- Samsung Heavy Industries
- Daewoo Shipbuilding & Marine Eng.
- Hyundai Heavy Industries
- STX Offshore & Shipbuilding
- Hudong-Zhonghua Shipbuilding
- Shanghai Waigaoqiao Shipbuilding
- Mitsubishi Heavy Industries
- Mitsui Engineering & Shipbuilding
- Kawasaki Heavy Industries
- etc.

Modification Projects

During their long lifetime, vessels face the necessity of Retrofitting, Modification, Refurbishment and/or Up-grading to respond to diverse market situations or new regulations. We supply suitable machinery and equipment for these projects in time by tying up with trustful makers in Japan and other countries.



EQUIPMENT

- Gas Detection System
- Air Compressor
- Fin Stabilizer
- ECDIS
- Ballast Water Management System
- MGO Pump
- etc.

Offshore Projects

Reliability of machinery and equipment is indispensable especially for offshore facilities and offshore support vessels. We supply high quality Japanese equipment with services based on accumulated know-how to FPSO, FSO, FSRU, FLNG, Oil Rig and offshore support vessels.



EQUIPMENT

- Steam Turbine Generator
- Water Injection Pump
- Sea Water Lift Pump
- Cargo & E/R Pump
- Fresh Water Generator
- Safety Relief Valve
- Anchor Handling & Towing Winch
- Thruster
- Gas Compressor
- etc.

CLIENT

- BW Offshore
- Bumi Armada
- SBM Offshore
- MODEC
- EMAS
- Omni Offshore Terminals
- MISC
- Keppel Offshore & Marine
- Jurong Shipyard
- Sembawang Shipyard
- Golar Management
- Teekay Shipping
- Remontowa Shipbuilding
- Malaysia Marine & Heavy Engineering
- TH Heavy Engineering
- etc.

Pump & Steam Turbine

SHINKO IND. LTD.

Cargo Handling Equipment



Cargo Pump & Turbine
700 - 6,000 m³/h



LNG, LPG Cargo Pump
15 - 2,100 m³/h



LNG Booster Pump
15 - 1,000 m³/h



LPG Cargo Pump
120 - 550 m³/h

Offshore Facility Equipment

Power Generation Module Equipment



Turbo Generator
Max. 20,000 kW



Vacuum Condenser with Steam Ejector unit
Max. 1,470 m³/h



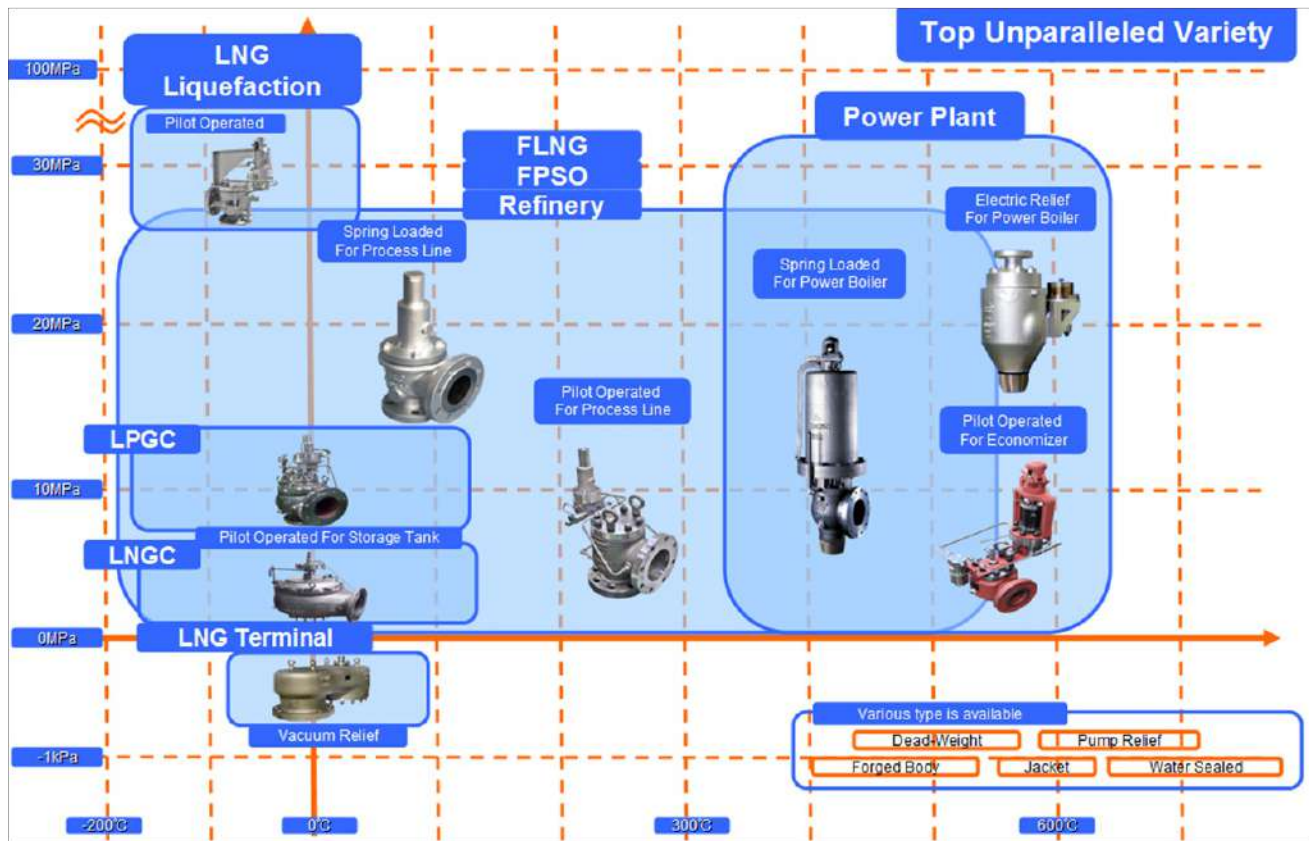
Water Injection Pump
Max. 450 m³/h



Sea Water Lift Pump

Safety Relief Valve

FUKUI SEISAKUSHO CO., LTD.



RE Model
(Spring loaded type)



ASME UV (Sec VIII) approved
Type approved by various Class
Various material/Option
Pressure: 0.035 ~ 42 MPa
Temp: -268 ~ 538 deg.C
Size: 3/4 ~ 20 inch (20~500A)

PSL-MD Model
(Pilot operated type)



Type approved by various Class
Pressure: 1~ 250 kPa
Temp: -196 ~ 125 deg.C
Size: 2 ~ 14 inch (50~350A)

SL Model
(Spring loaded type)



ASME V (Sec I) / UV (Sec VIII) approved
Type approved by various Class
Pressure: ~ 36.8 MPa
Temp: ~ 604 deg.C
Size: 1 ~ 8 inch (25~200A)

Fresh Water Generator

SASAKURA ENGINEERING CO., LTD.

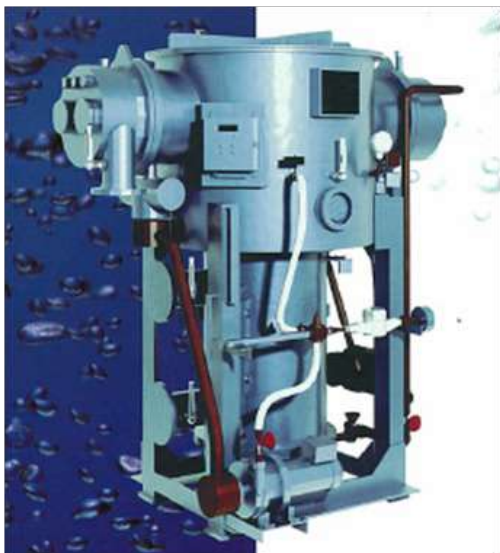
Fresh Water Generator



Reverse Osmosis Type Desalination System
1.5 – 250 t/day



Vacuum Vapor Compression Type Distiller
24 – 480 t/day



Tubular Type Fresh Water Generator
Series-X
5 -100 t/day



Multi Effect Submerged Tube Type Fresh Water Generator
Double Stage: 40 -150 t/day
Triple Stage: 100 – 200 t/day



Plate Type Fresh Water Generator
Series-EX
5 – 60 t/day

Seawage Treatment Plant



1,920 - 21,000 L/day

Overseas Group Companies

Europe

Fuji Trading (Marine) B. V. Rotterdam

Kortenoord 2-8, 3087 AR Rotterdam, The Netherlands
Tel : (31) 10-429-8833 Fax : (31) 10-429-5227
e-mail : info@fujitrading.nl

Fuji Trading Co Ltd., London Office

1st Floor, Warwick House, 65-66 Queen Street,
London EC4R 1EB, U.K.
Tel : (44) 20-7236-0507 Fax : (44) 20-7236-0521
e-mail : mail@fujitrading.co.uk (UK Section)
mail-2@fujitrading.co.uk (Continent/Scandinavia Section)

Fuji Trading Co., Ltd., Greece Office

Aristotelous 10, 18535 Piraeus, Greece
Tel : (30) 210-429-7091 Fax : (30) 210-429-7092
e-mail : info@fujitrading.gr

North and South America

Fuji Trading (America) Inc.

8515 Kelso Drive Suite A & B, Baltimore MD21221, U.S.A.
Tel : (1) 410-238-7985 Fax : (1) 410-238-7989
e-mail : sales@fujitrading.us

Fuji Trading Co., Ltd. c/o Gulf States Marine Supplies Inc

6602 Supply Row 77011 Houston, U.S.A.
Tel : (1) 713-921-2255 Fax : (1) 713-921-0810
e-mail : tatsuya.ueda@fujitrading.co.jp

Fuji Metalock Brasil S.A.

Rua da Gamboa, 281. Rio de Janeiro - RJ. BRASIL. 20220-324.
Tel : (55) 21 2516-5561 Fax : (55) 21 2516-5562
e-mail : sales@fujimetalock.com.br

Middle East

Middle East Fuji L.L.C.

Al Quoz Industrial Area, Street No.18, Building No.10,
P.O. Box No.19227, Dubai, U.A.E.
Tel : (971) 4-347-4444 Fax : (971) 4-347-2771 / 2772
e-mail : info@mef.ae

Middle East Fuji Engineering L.L.C (A Subsidiary of MEF)

Al Quoz Industrial Area - 3, Street No.18, Building No.10,
P.O. Box No.38104, Dubai, U.A.E.
Tel : (971) 4-509-2080 Fax : (971) 4-509-2081
e-mail : engineering@mef.ae

Middle East Fuji L.L.C. (Qatar) (A Subsidiary of MEF)

P.O. Box No.205078, Doha, Qatar
Tel : Mobile +974-5540-1272 e-mail : qatar@mef.ae

Middle East Fuji Khimji's Co. LLC

(A Subsidiary of MEF)

P.O. Box 19, Muscat, PC-100, Sultanate of Oman
Tel : (968) 2479 3240 Fax : (968) 2479 3250
e-mail : info@mefkoman.com

Philippines

Fuji Trading Co., Ltd., Manila Office

Unit 7J, 7th Floor, OPL Building, 100 C. Palanca Street,
Legaspi Village, Makati City, Philippines ZIP Code 1200
Tel : (63) 02-478-7665 / 7667 / 7668
e-mail : ronaldo.navales@fujitrading.ph

Singapore

Fuji Trading (Singapore) Pte Ltd.

#24 Chia Ping Road, Singapore 619976
Tel : (65) 6264-1755 Fax : (65) 6265-0443 e-mail : info@fujifts.com

Fuji Horiguchi Engineering Pte Ltd.

#24 Chia Ping Road, Singapore 619976
Tel : (65) 6863-6368 Fax : (65) 6863-8310
e-mail : info@fujifhe.com

China

Fuji Trading (Shanghai) Co., Ltd.

1st floor, No.3 Building East, 258 Jinzang Road,
Pudong District, Shanghai 201206, China
Tel : (86) 21-6853-8813 Fax : (86) 21-5821-1257 / 3882-0489
e-mail : ftzstores@fujitrading.net / ftzspare@fujitrading.net
ftzrepair@fujitrading.net

Fuji Transport Systems (China) Co., Ltd.

1st floor, No.3 Building West, 258 Jinzang Road,
Pudong District, Shanghai 201206, China
Tel : (86) 21-2022-1280 Fax : (86) 21-5087-5181
e-mail : fujitrans-shanghai@fujitransport.cn

Yokotsu (Shanghai) Co., Ltd.

4-103, Jinzang Road 258, Jinqiao Export Processing Area,
Pudong New Area, Shanghai China, 201206
Tel : (86) 021-5031-6880 Fax : (86) 021-5032-6208
e-mail : service@yokotsu-sh.cn

Fuji Marine Logistics (Shenzhen) Ltd.

19 Jintou West Street, Sha Tou Jiao,
Yan Tian Area, Shenzhen, China
Tel : (86) 755 25793453 Fax : (86) 755 25793940
e-mail : info@fujimarinesz.com

Hong Kong

Fuji Trading (Marine) Co., Ltd. / Fuji Marine Logistics (HK) Ltd.

Unit B, Ground Floor, Wyler Centre 1, 202-210
Tai Lin Pai Road, Kwai Chung, New Territories, Hong Kong
Tel : (852) 2529-9177 Fax : (852) 2865-6175
e-mail : info@fujitradinghk.com / info@fujimarinehk.com

Korea

Hanil-Fuji (Korea) Co., Ltd.

434-2, Sinhang-ro, Jinhae-gu, Changwon-si, Gyeongnam
Korea, Zip Code : 645-520 (Busan New Port)
All Departments (Except Machinery Department)
Tel : (82) 51-712-8300 Fax : (82) 51-631-7735
Machinery Department
Tel : (82) 51-712-8400 Fax : (82) 51-631-7735
e-mail : shipstore@hanilss.com / spare1@hanilss.com (Europe Area)
spare2@hanilss.com (Asia&America) / tech@hanilss.com

Fuji Global Logistics Co., Ltd.

434-2, Sinhang-ro, Jinhae-gu, Changwon-si, Gyeongnam
Korea, Zip Code : 645-520 (Busan New Port)
Tel : (82) 51-712-8321 Fax : (82) 55-723-2266
e-mail : sales@fujiglobal.co.kr
forwarding@fujiglobal.co.kr



FUJI TRADING CO., LTD.

Address: 6, Fukaehamamachi, Higashinada-Ku, Kobe, 658-0023, Japan

TEL: +81 (0) 78 413 2657 FAX: +81 (0) 78 411 0077

WEB: <http://www.fujitrading.co.jp> E-mail: mes@fujitrading.co.jp